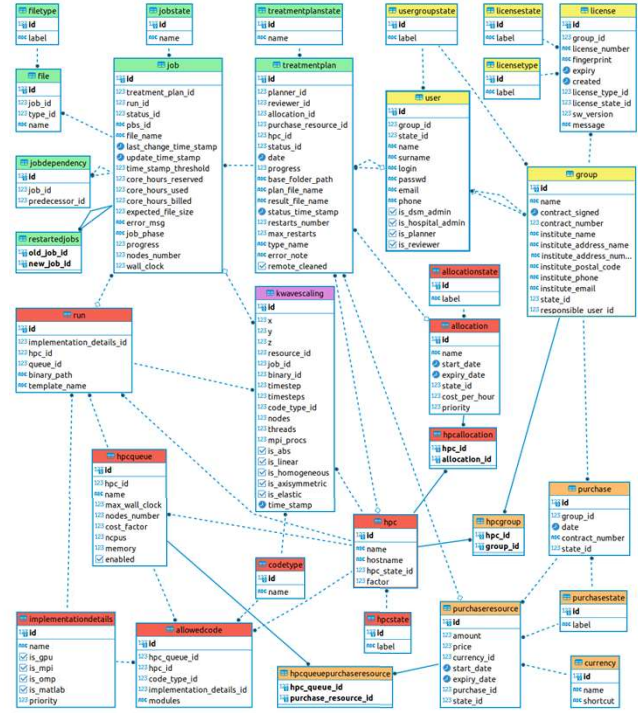
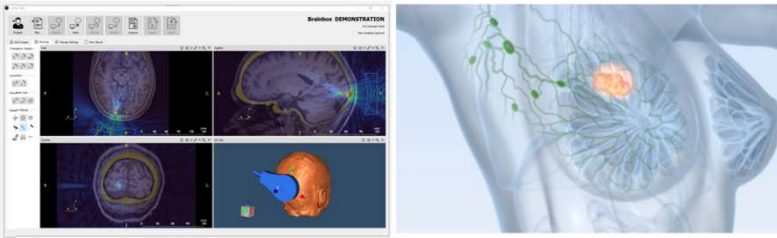
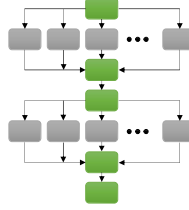


1 Motivation

Routine execution of scientific problems (*workflows*) is an everyday burden for many scientists. Efficiency of the workflow executions may be reduced due to (1) a selection of **inappropriate**, usually default, **execution parameters**, e.g., number of computing nodes, allocated time, and (2) an **inappropriate handling of HPC facilities** (executing heavy tasks using inappropriate nodes, etc.). These issues lead to facility **overloads**, **outages**, **long waiting times** in computational queues and **prevents the job scheduler to work efficiently**.

2 k-Dispatch

A workflow management software, k-Dispatch, provides **HPC as a service** and offers key features like workflow composition, execution offloading and monitoring, accounting and reporting. k-Dispatch implements approaches to find suitable execution parameters for tasks within workflows targeting different allocation options and performance constraints. k-Dispatch is involved in ultrasound **neurostimulation** applications and **breast cancer diagnosis**.



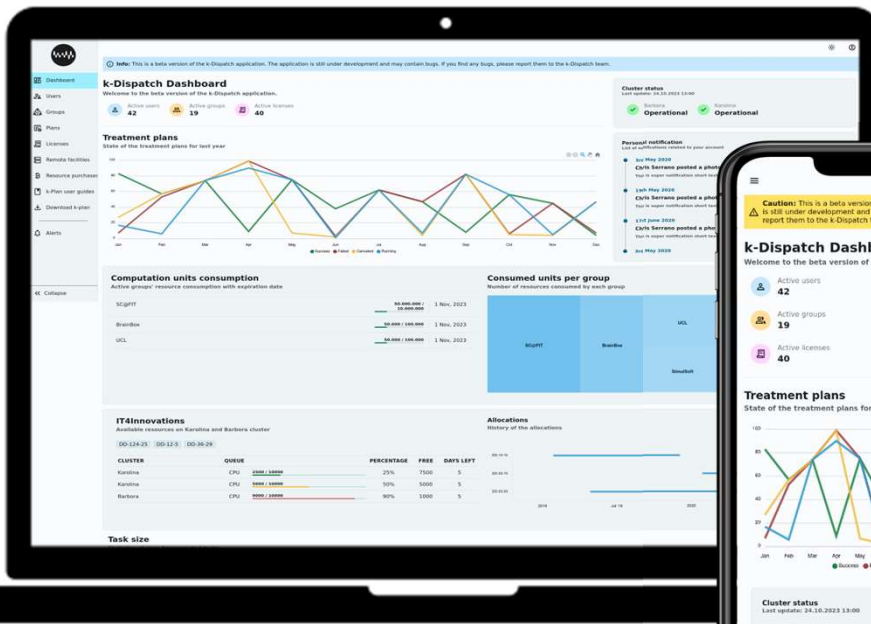
Quick Explore

Aggregates, Trends

Alerts, Notifications

Drill-Down

Drill-Through



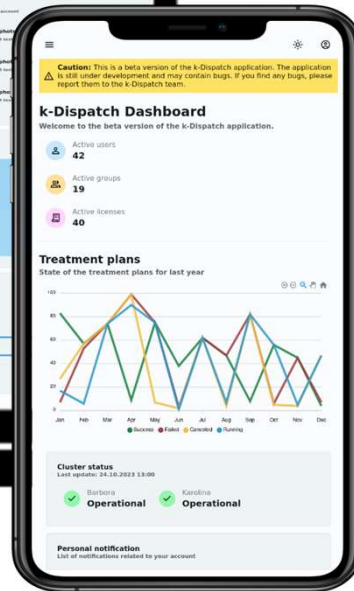
URL Filtering

Device-Aware UI

Real and Past Data

Compare

Large View Analytics



3 k-Dispatch Administrations

Although k-Dispatch implements so called **plug & execute** paradigm enabling easy code extensions of new computing facilities, workflows and input data, administrators need to access its database regularly for many reasons: (1) obtaining **statistics** about computed workflows, tasks, users, groups, etc., (2) **adding new records**, e.g., users, groups, licenses, (3) **updating** binaries and remote facility-related data, (4) **handling resource allocations**, and (5) **reporting** and **informative purposes**.

4 Conclusions

We designed an **interactive** and **device-aware** web dashboard for administrators and regular users of k-Dispatch. Both groups of users have different capabilities and rights, therefore the dashboard content together with allowed views and actions are specific for distinct users. This piece of software was implemented under **agile methodology**.