

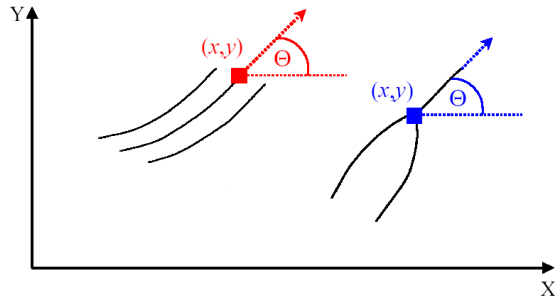
Skin diseases in fingerprints

Martin Drahanský + Ondřej Kanich

Brno University of Technology, Faculty of Information Technology
Božetěchova 2, 612 66 Brno, Czech Republic
<http://www.fit.vutbr.cz/~drahan>
drahan@fit.vutbr.cz



- Fingerprint technologies



Optical technology



E-Field technology



Capacitive technology



Electro-optical technology



Ultrasound technology



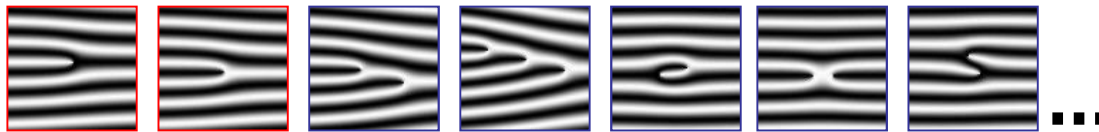
Pressure sensitive technology



Thermal technology

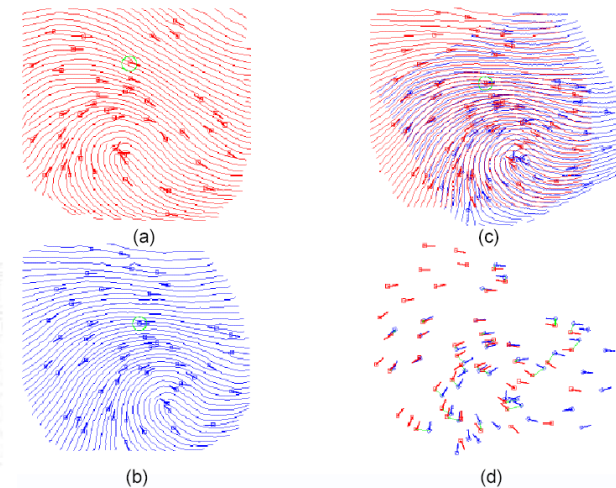
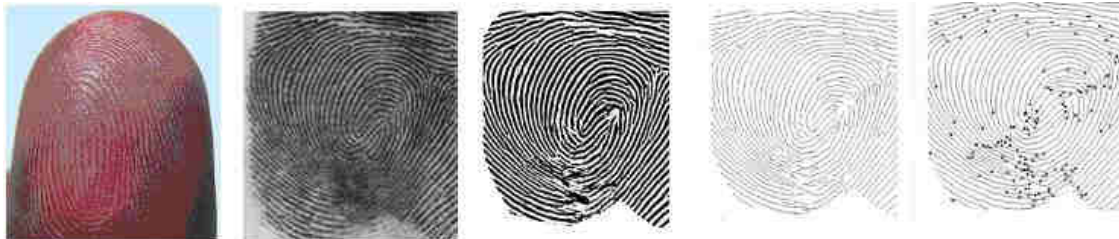


- Minutiae



Stored n quadruples $\{x_i, y_i, t_i, \theta_i\}, i=1..n$

- Recognition process







**Suprema SFM 3020
(fake – rubber stamp)**



Synthetic fingerprints (SFinGe)



Artificial fingers

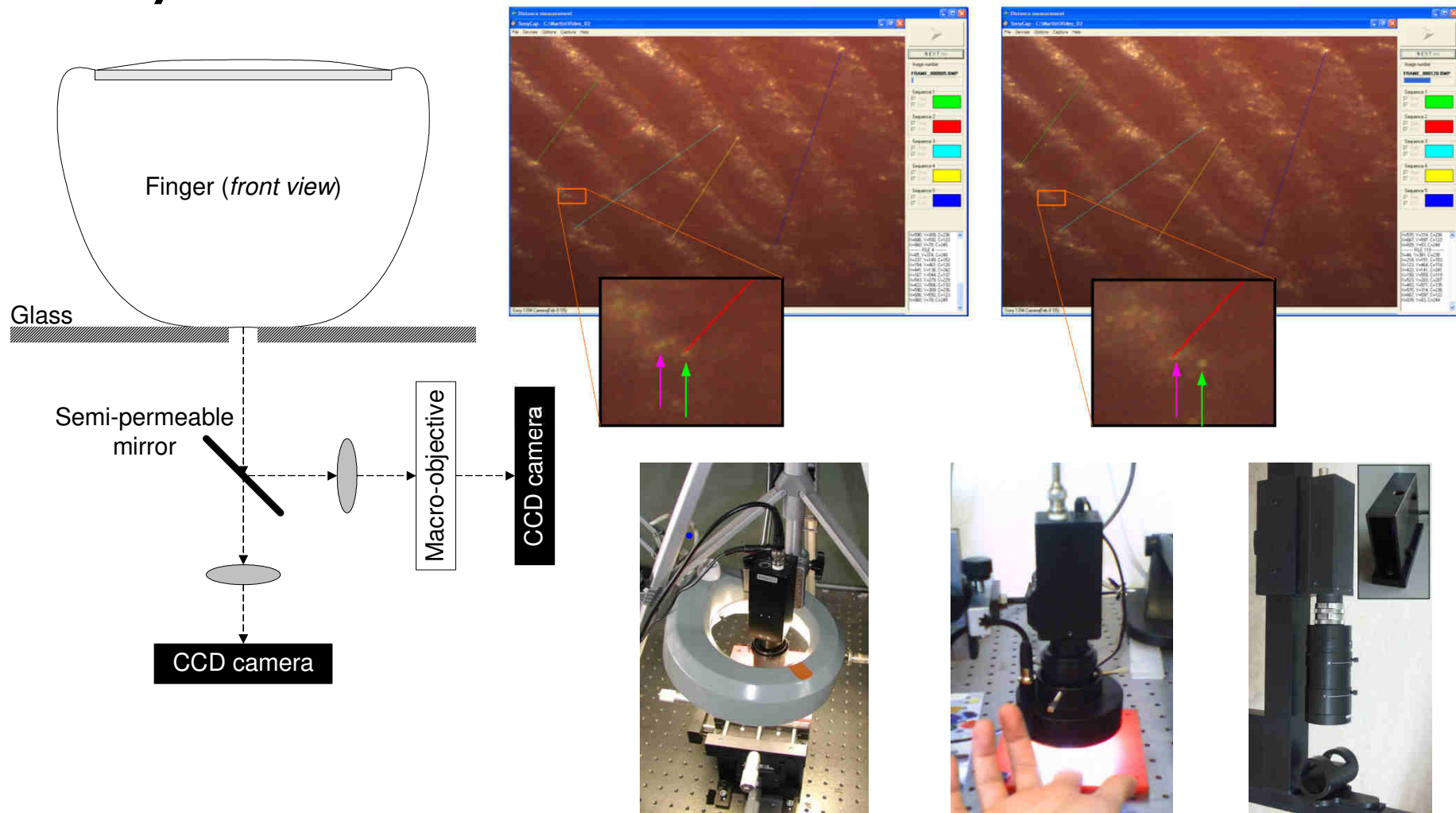


Fake fingerprints of various materials

Finger(print) fakes – spoofing II.



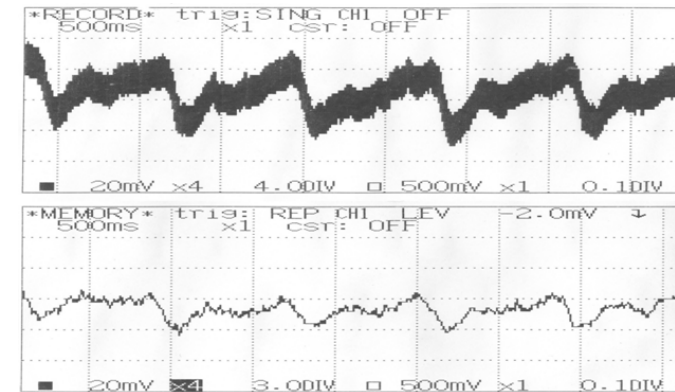
- We have some international and national patents and utility models in this area



- Sweat detection

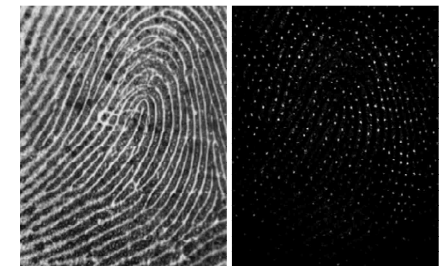
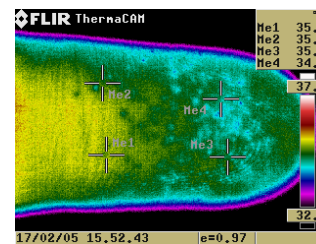


- Heart activity detection**



- Ultrasound principle / tomography

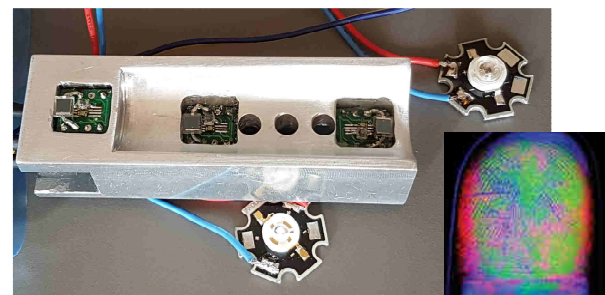
- Temperature** (stimulus)



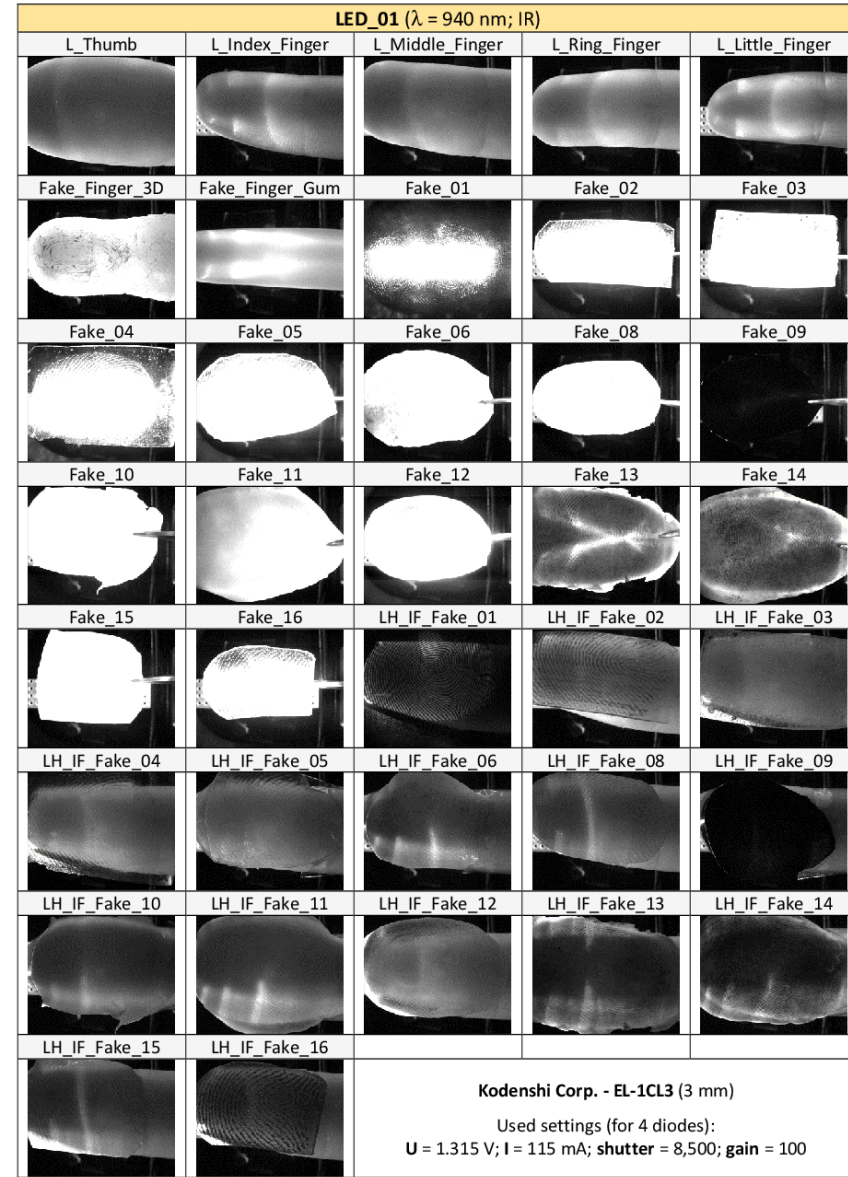
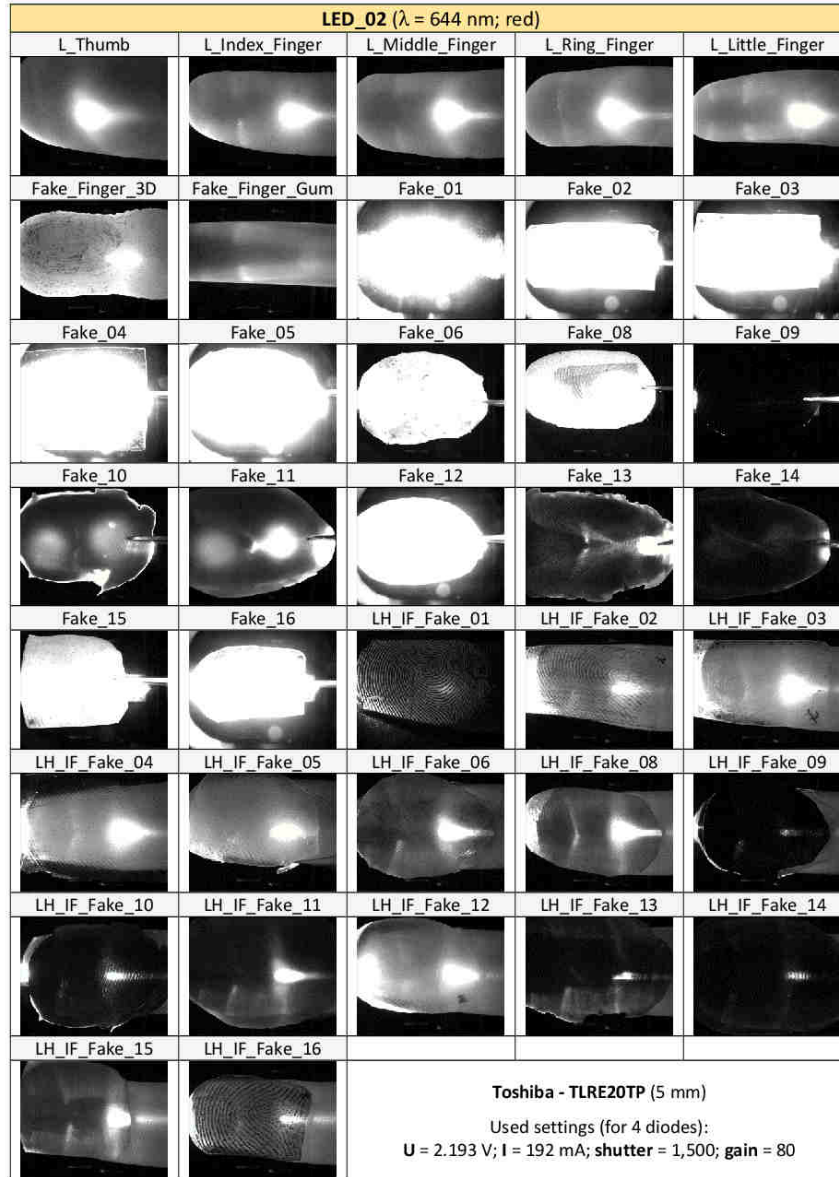
- Skin elasticity / Skin color**



- Multispectral properties**
(acquisition of DB
+ patent)



Liveness detection = anti-spoofing III.





Over 2,400 FPs



a) CRD

b) CRD



c) E500



d) EII



e) MSO



f) DIN

Psoriasis – a partial seizure.



a) MSO

b) MSO



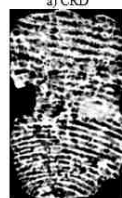
c) E500

d) EII



a) CRD

b) CRD



c) E500



d) EII



a) CRD

b) CRD



c) E500



d) EII



e) CRD

f) DIN
Fingertip eczema – a light form.



e) MSO

f) DIN

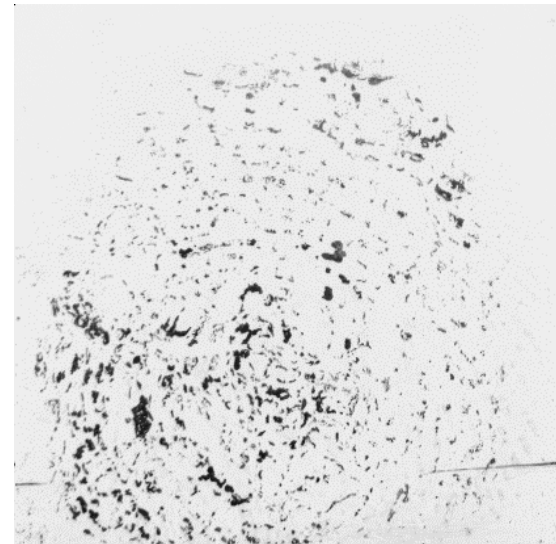
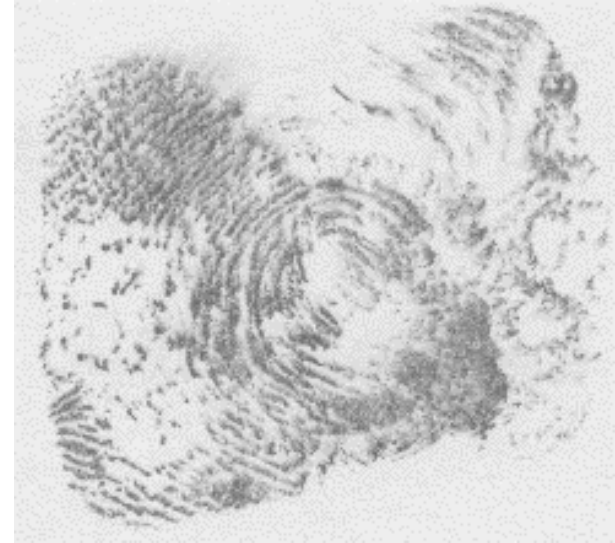
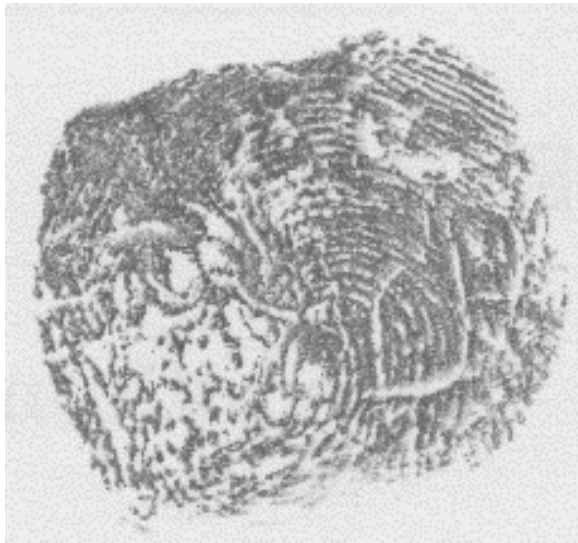
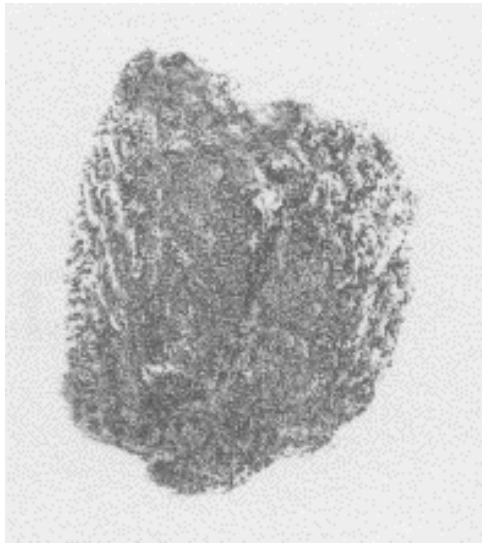
Dyshidrosis.

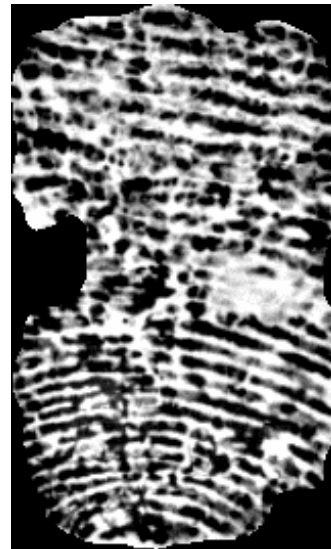
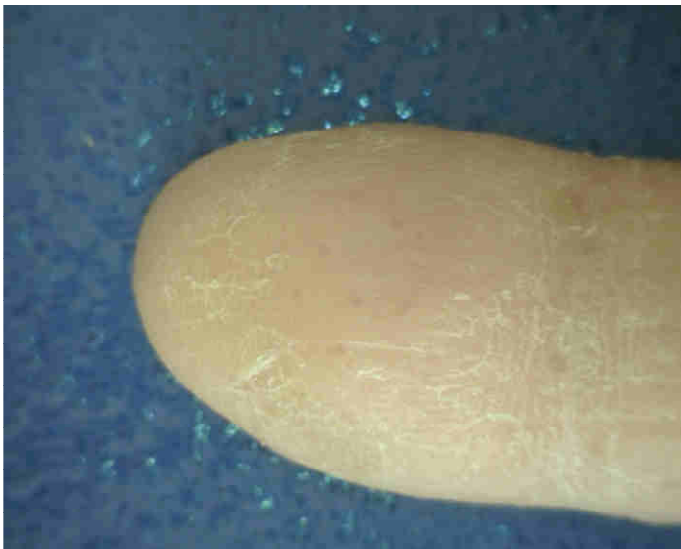
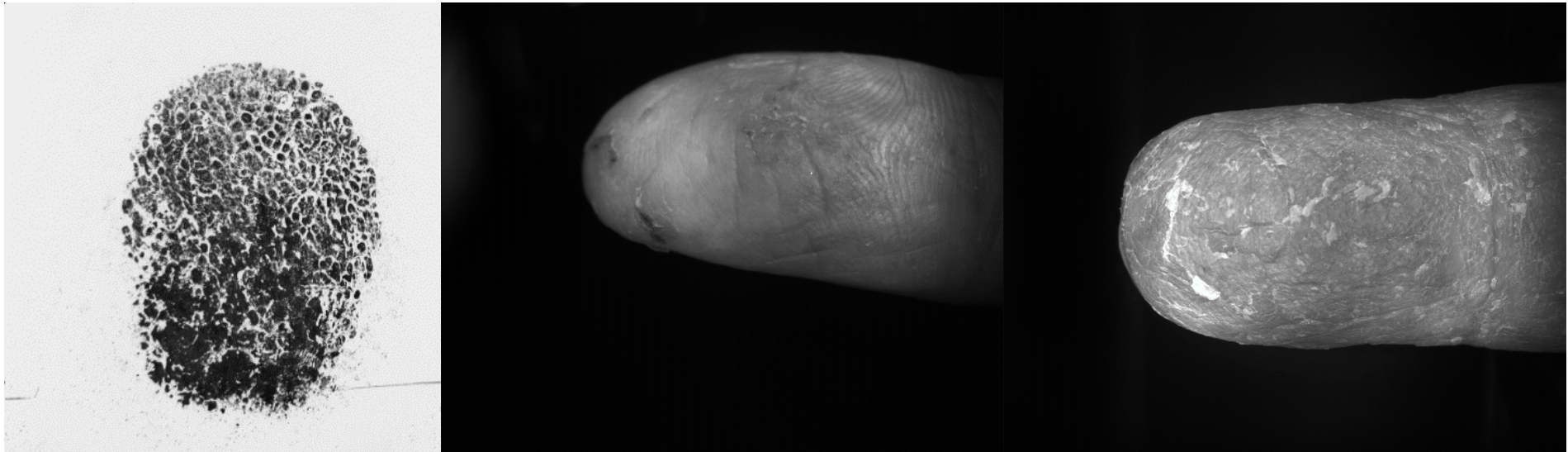


e) MSO

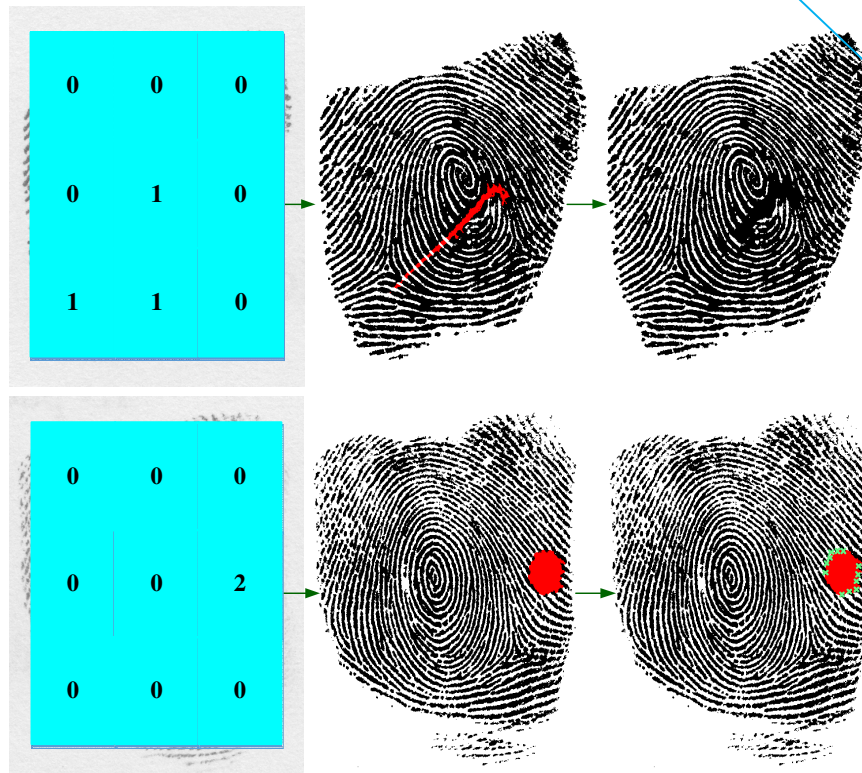
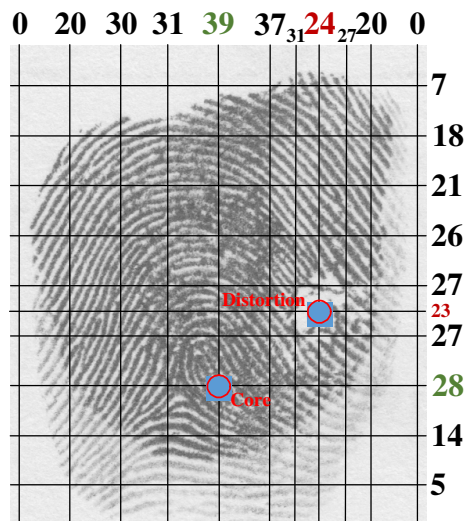
f) DIN

Verruca vulgaris.





- Histopathologic changes
- Change of skin color
- Histopathologic changes and color change
- We have internationally unique DB
- Algorithms for detection and recovery



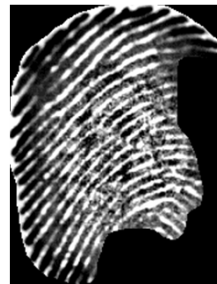
Psoriasis – a partial seizure.

- Liquids used in daily life
 - Strong influence

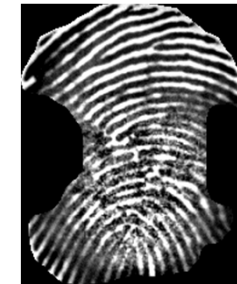
Reference



Shower gel



Dish gel



- Little influence

Reference



Hand-cream



Detergent

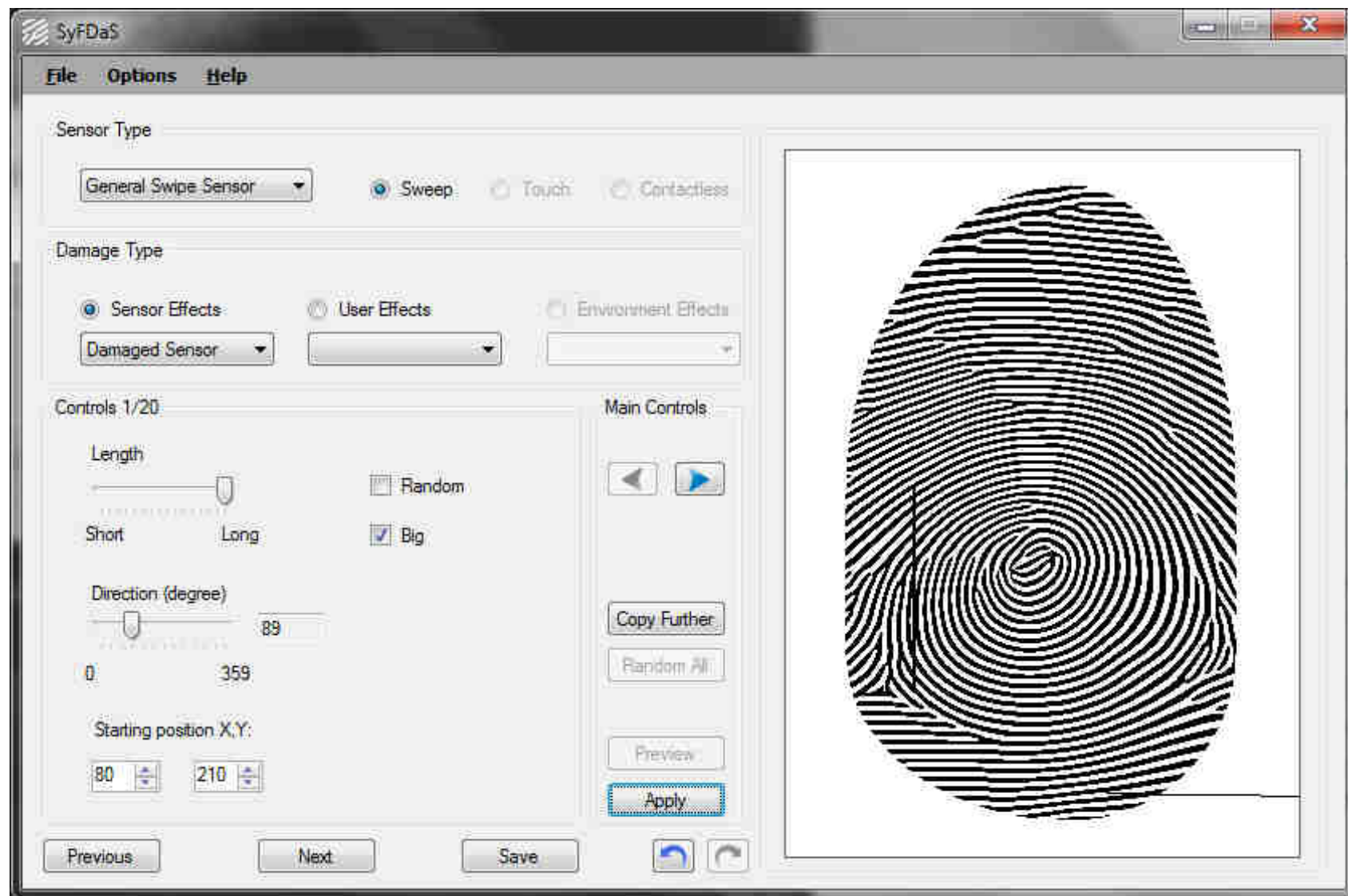


- Troubles in getting damaged fingerprints
- Very specific fingerprints
- This is an inverse biometric task
- Could be generated from random minutiae points or from template!

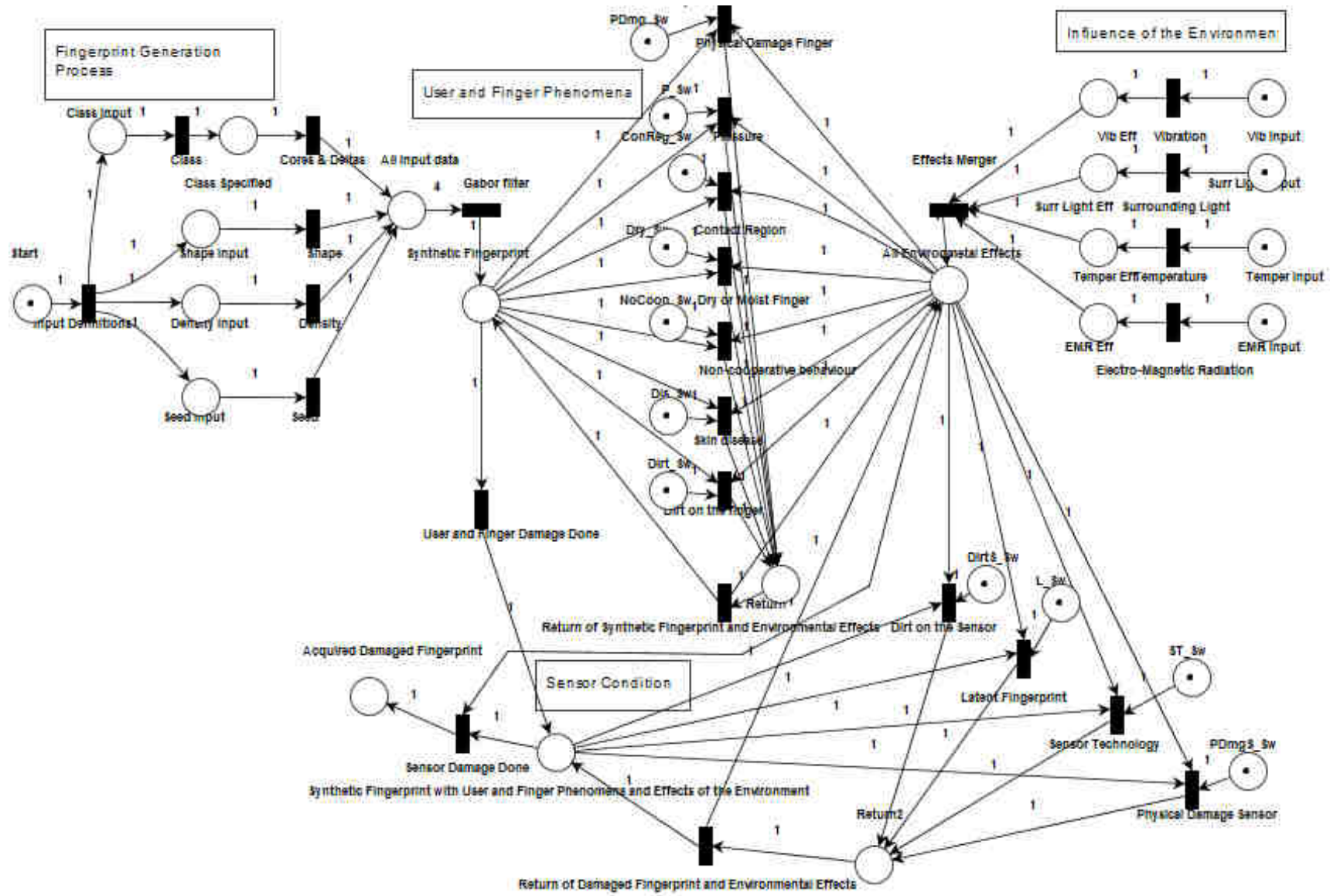


- Application **SFinGe**
 - biolab.csr.unibo.it/sfinge.html
 - Generates very real fingerprints
- Application **Anguli**
 - <http://dsl.cds.iisc.ac.in/projects/Anguli/>
 - Similar principle to SFinGe
 - Quick generation of large-scale DBs
- **Our own application**
 - Generation using minutiae points
 - Damage/disease is a library
 - Many various damages/diseases

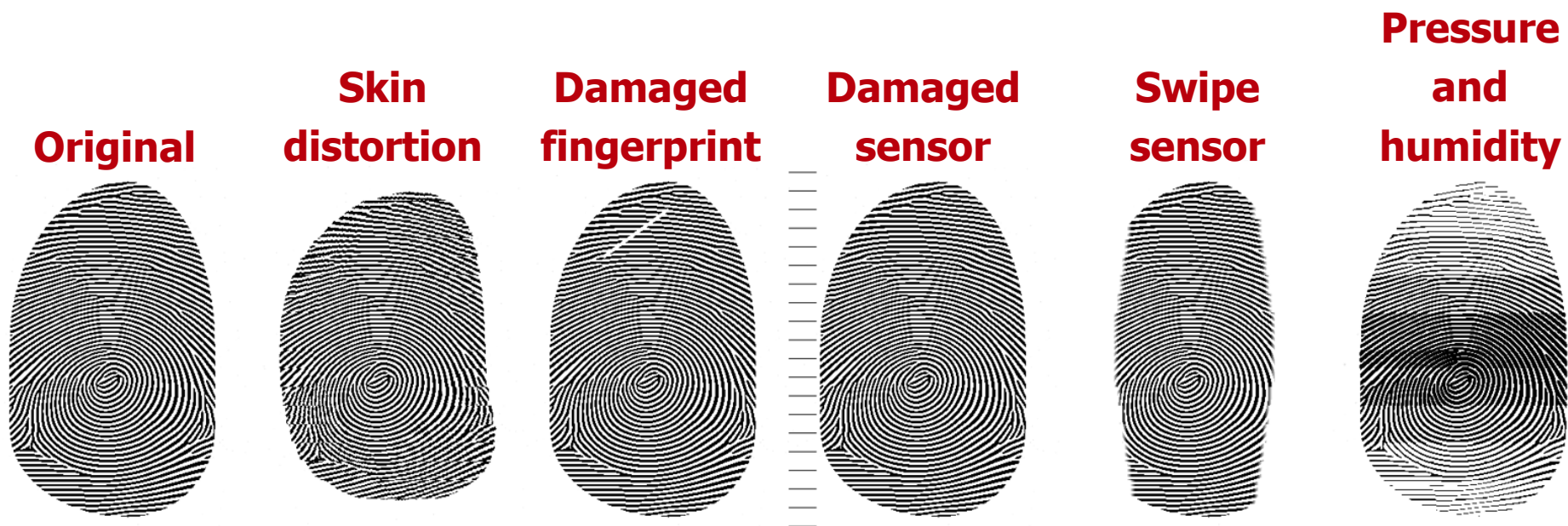




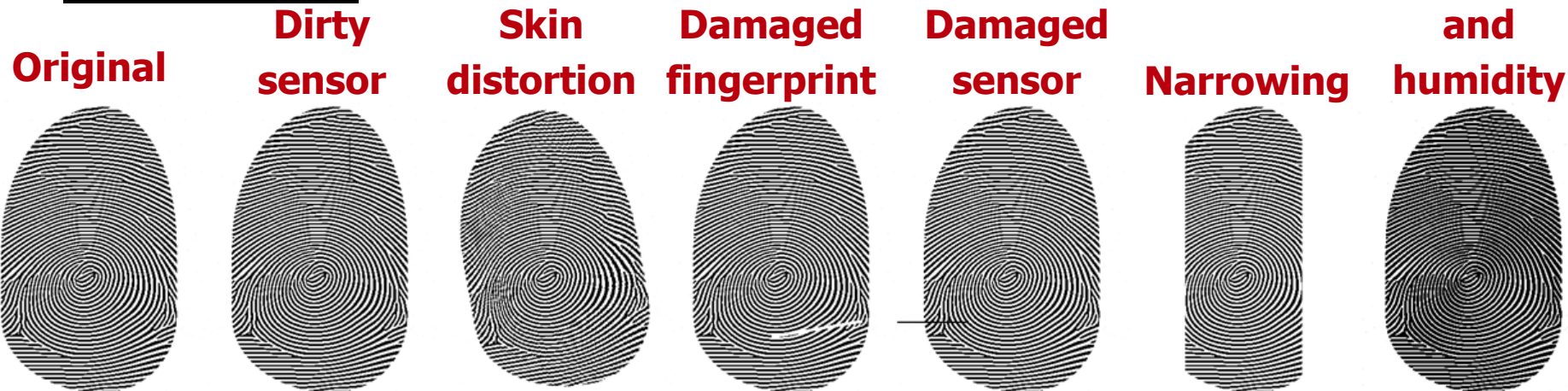
Synthetic fingerprints – generation IV.



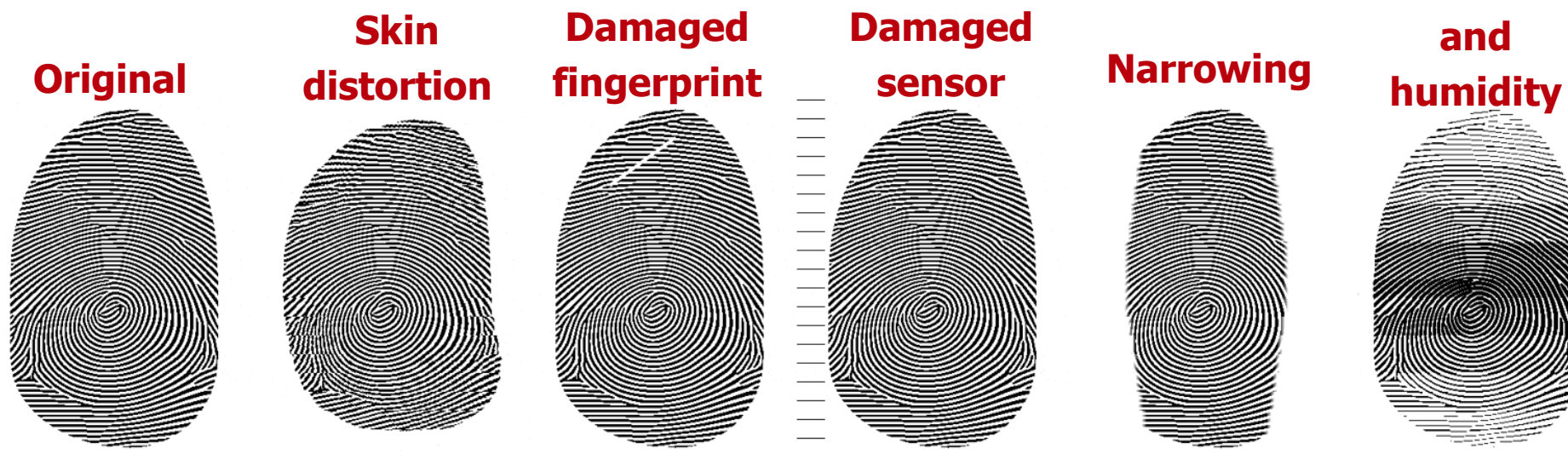
- Various fingerprint damages implemented yet



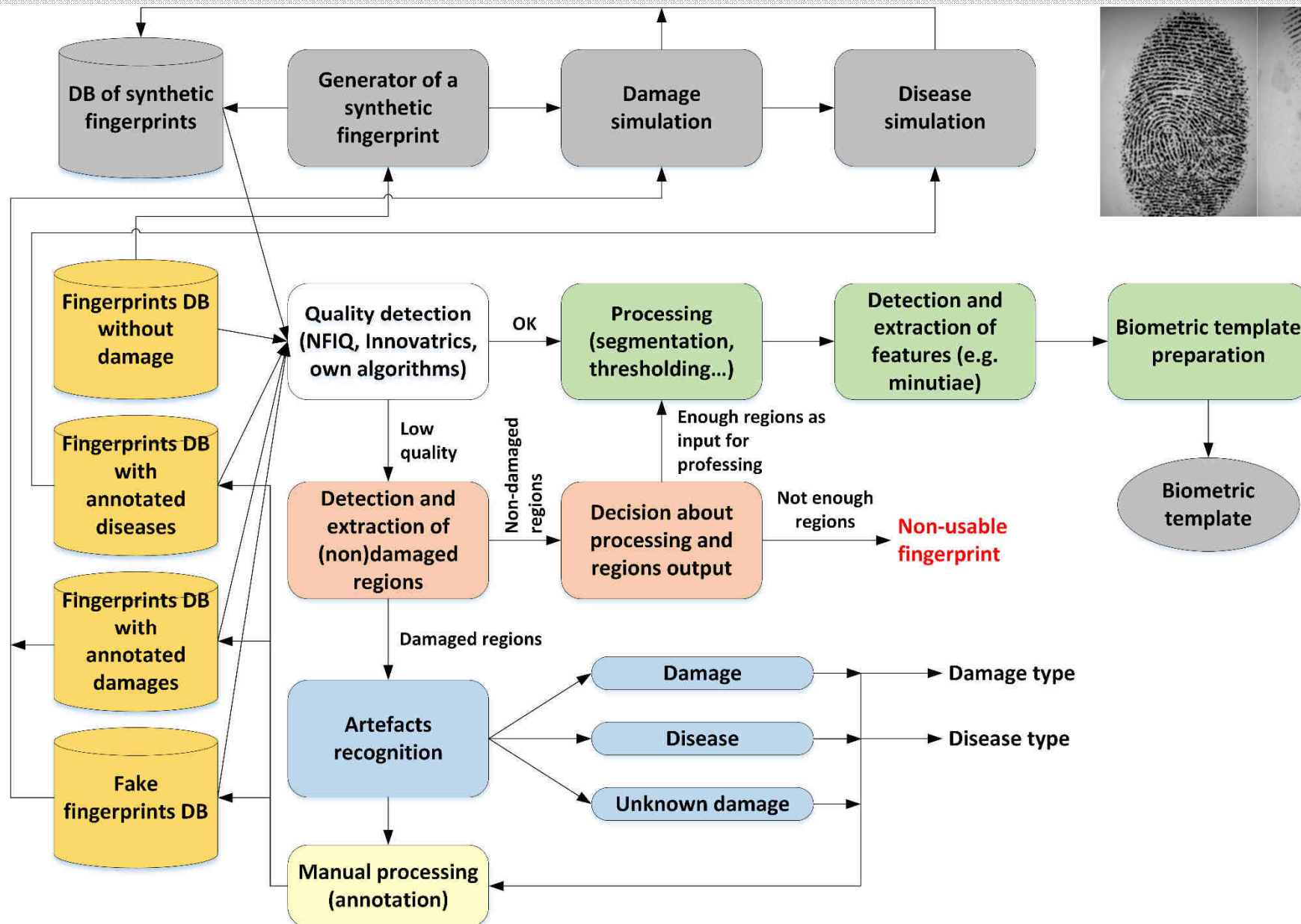
- Touch sensor



- Sweep sensor



Fingerprints – an overview of our algorithm



Thank you for your attention

Thanks to: IGA FIT-S-17-4014 „*Secure and reliable computer systems*“